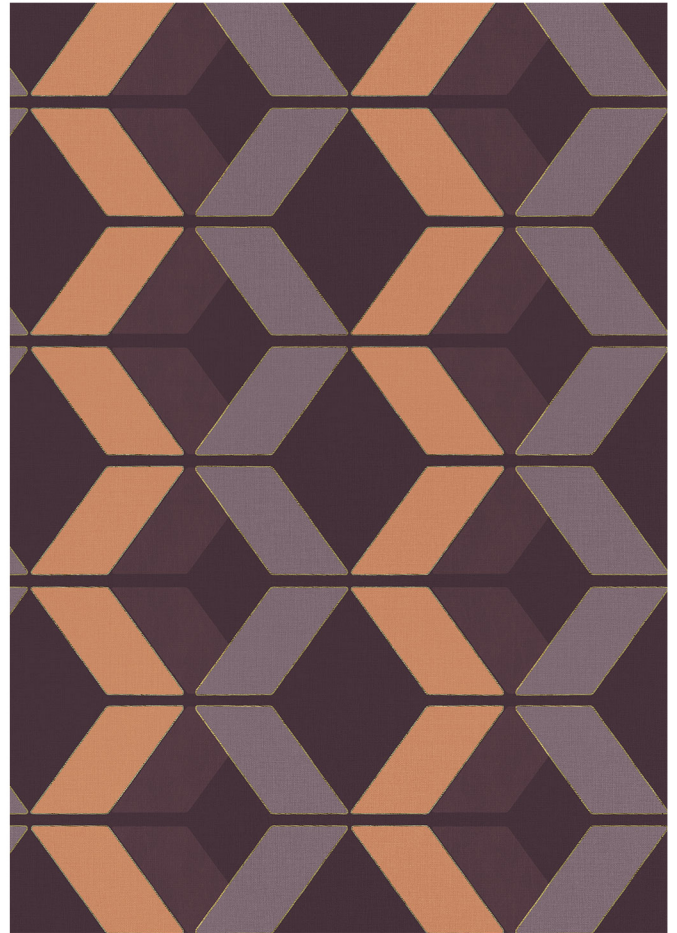


AZURE

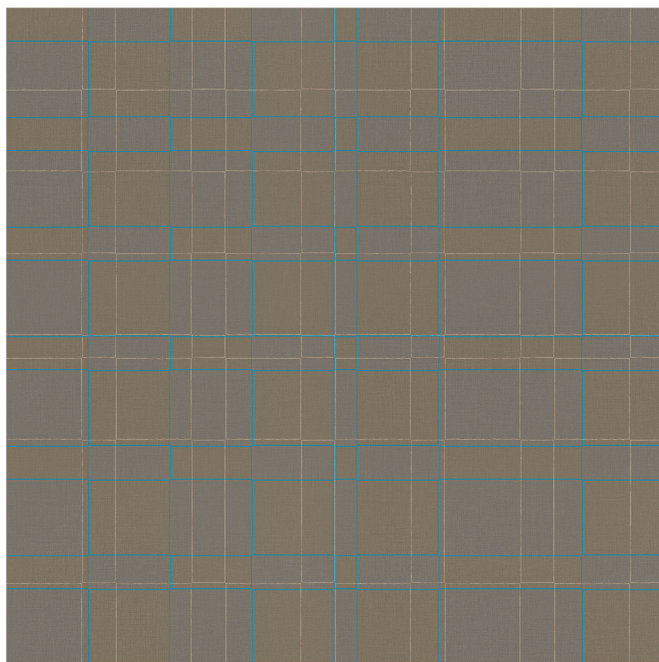
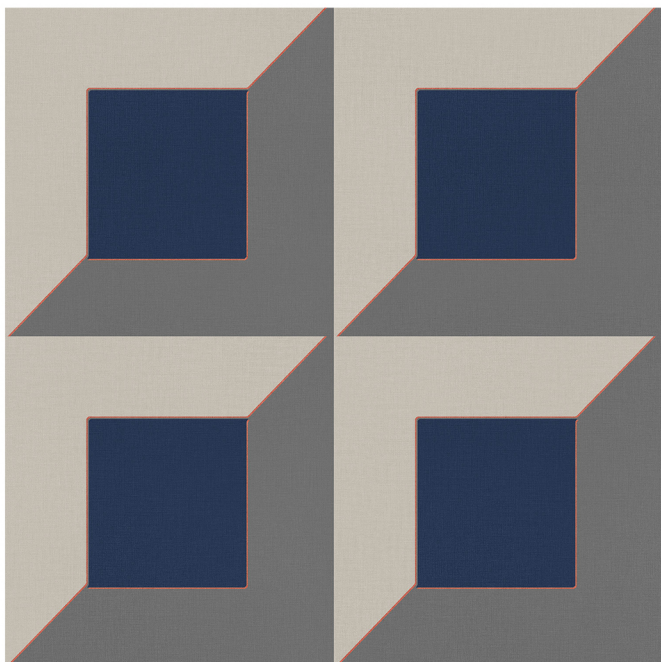
Still Life Wallpaper Collection



Or.nami, the design studio founded by its artistic director Gabriella Fusillo, recently introduced the Still Life wallpaper collection, which pays homage to brutalism. Defined by heavy aesthetics, sculptural forms and cold materials, the patterns reinterpret the “monumental heft of Brutalist works.”

The expressive collection combines decisive, sculptural and austere motifs with refined accents that contribute a compelling delicacy. Expertly balancing forms, proportions and colours, the patterns reveal unexpected luminous slants that enhance the background colour and emphasize the volumetric and three-dimensional perspectives.

AZURE



AZURE

Fusillo also manages to give the wallcoverings the appearance of an organic and natural component through light touches of stylized florals.



The Still Life collection is available on vinyl backers, pure silk backing and are offered in 300-high-by-600-long-centimetre formats and can also be fully customized for specific needs and requirements. A contract-quality version is also an option.

